

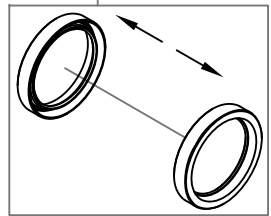
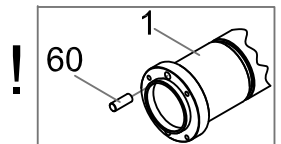
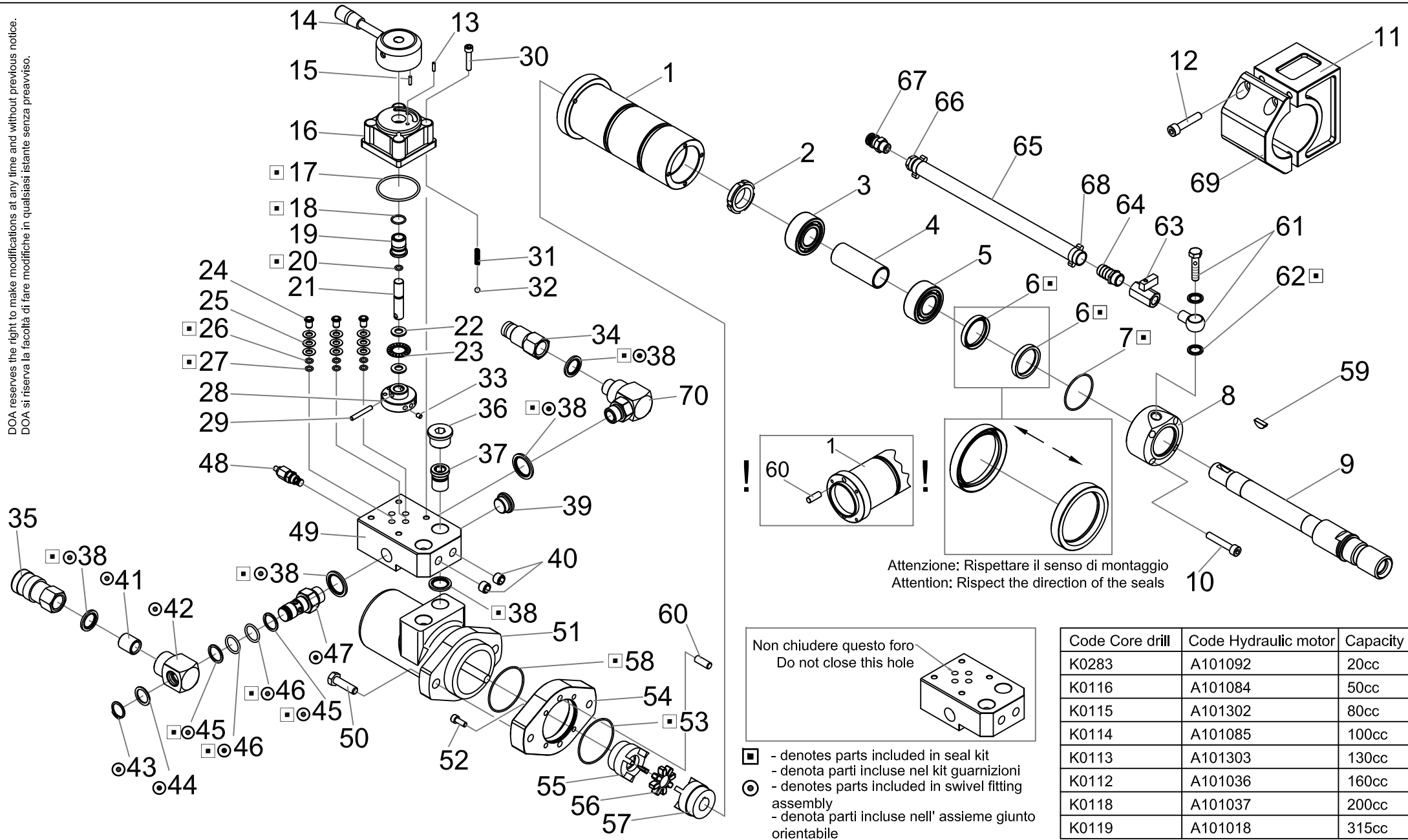
AK 50

PISTOL CORE DRILL
CAROTATRICE MANUALE

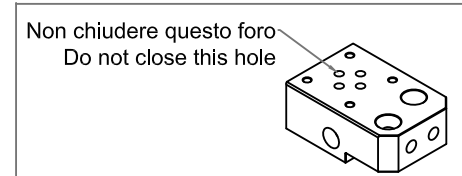
PART LIST - LISTA DELLE PARTI

May 2014 rev. 1 SEE TAB.

DOA reserves the right to make modifications at any time and without previous notice.
DOA si riserva la facoltà di fare modifiche in qualsiasi istante senza preavviso.



Attenzione: Rispettare il senso di montaggio
Attention: Respect the direction of the seals



- ▣ - denotes parts included in seal kit
- denota parti incluse nel kit guarnizioni
- ⊙ - denotes parts included in swivel fitting assembly
- denota parti incluse nell' assieme giunto orientabile

Code Core drill	Code Hydraulic motor	Capacity
K0283	A101092	20cc
K0116	A101084	50cc
K0115	A101302	80cc
K0114	A101085	100cc
K0113	A101303	130cc
K0112	A101036	160cc
K0118	A101037	200cc
K0119	A101018	315cc

AK50

PISTOL CORE DRILL

PART LIST
Reference exploded view
May 2014 revision 1



POSITION	QUANTITY	DESCRIZIONE	DESCRIPTION	CODICE DOA DOA CODE	PRICE GROUP
1	1	SUPPORTO CENTRALE	BODY	D 72 1134	27
2	1	GHIERA	LOCKING NUT	A 61 1047	7
3	1	CUSCINETTO	BEARING	A 61 1011	10
4	1	DISTANZIALE	SPACER	D 70 1367	10
5	1	CUSCINETTO	BEARING	A 61 1029	20
6	2	GUARNIZIONE ■	SEAL ■	A 65 1069	4
7	1	O-RING ■	O-RING ■	A 65 1231	2
8	1	COPERCHIO ACQUA	COVER	D 72 1136	17
9	1	ALBERO	SHAFT	D 72 1149	28
10	4	VITE	SCREW	A 62 1289	1
11	1	SUPPORTO CAROTATORE	SUPPORT	D 72 1137	27
12	4	VITE	SCREW	A 62 1201	1
13	1	SPINA ELASTICA	PIN	A 63 1040	1
14	1	LEVA	LEVER	D 92 1219	19
15	1	GRANO	THREADED PIN	A 62 1094	1
16	1	CORPO VALVOLA SUPERIORE	VALVE BODY	D 72 1054	21
17	1	O-RING ■	O-RING ■	A 65 1223	1
18	1	O-RING ■	O-RING ■	A 65 1222	1
19	1	BUSSOLA	BUSHING	D 70 1171	9
20	1	O-RING ■	O-RING ■	A 65 1061	1
21	1	PERNO	PIN	D 70 1170	9
22	2	RALLA	THRUST BEARING	A 61 1016	2
23	1	CUSCINETTO	BEARING	A 61 1008	5
24	3	BUSSOLA	BUSHING	D 70 1172	4
25	9	MOLLA	SPRING	A 50 1007	1
26	3	BACK UP RING ■	BACK UP RING ■	A 65 1219	4
27	3	O-RING ■	O-RING ■	A 65 1220	1
28	1	DISTRIBUTORE	DISTRIBUTOR	D 70 1169	15
29	1	SPINA CILINDRICA	PIN	A 63 1015	1
30	4	VITE	SCREW	A 62 1144	1
31	1	MOLLA	SPRING	D 50 1022	3
32	1	SFERA	BALL	A 61 1009	1
33	3	TAPPO A STRAPPO	PLUG	A 60 1034	3
34	1	INNESTO RAPIDO MASCHIO	MALE QUICK RELEASE COUPLING	A 16 1026	12
35	1	INNESTO RAPIDO FEMMINA	FEMALE QUICK RELEASE COUPLING	A 16 1025	16
36	2	TAPPO	PLUG	A 16 1066	4
37	2	VITE	SCREW	D 70 1344	13
38	6	RONDELLA DI TENUTA ● ■	SEAL WASHER ● ■	A 65 1200	1
39	1	TAPPO	PLUG	A 16 1113	2
40	2	TAPPO	PLUG	A 16 1062	1
41	2	MANICOTTO FILETTATO ●	THREADED COUPLING ●	A 16 1064	2
42	2	GIUNTO ORIENTABILE ●	SWIVEL FITTING ●	D 70 1005	5
43	2	SEEGER ●	SEEGER ●	A 50 1023	1
44	2	RONDELLA CALIBRATA ●	WASHER ●	A 50 1021	1
45	4	BACK UP RING ● ■	BACK UP RING ● ■	A 65 1103	3
46	4	O-RING ● ■	O-RING ● ■	A 65 1102	1
47	2	PERNO ●	PIN ●	D 70 1084	9
48	1	VALVOLA DI MASSIMA PRESSIONE	VALVE	A 13 1051	25
49	1	VALVOLA	VALVE BODY	D 72 1001	23
50	2	VITE	SCREW	A 62 1140	1
51	1	MOTORE IDRAULICO	HYDRAULIC MOTOR	SEE TAB.	*
52	4	VITE	SCREW	A 62 1023	1
53	1	O-RING ■	O-RING ■	A 65 1007	1
54	1	ADATTATORE	ADAPTER	D 72 1135	24

55	1	MOZZO PER GIUNTO	HUB	A 14 1032	19
56	1	ANELLO PER GIUNTO	FLEXIBLE COUPLING	A 14 1034	9
57	1	MOZZO PER GIUNTO	HUB	A 14 1033	19
58	1	O-RING ■	O-RING ■	A 65 1274	1
59	1	LINGUETTA	KEY	A 63 1055	1
60	2	SPINA	PIN	A 63 1011	1
61	1	VITE E OCCHIOLO	SCREW AND EYE FITTING	A 14 1241	10
62	2	RONDELLA DI TENUTA ■	SEAL WASHER ■	A 65 1198	1
63	1	VALVOLA A SFERA	BALL VALVE	A 13 1027	9
64	1	PORTAGOMMA	HOSE-END FITTING	A 16 1096	7
65	1	TUBO	HOSE	A 15 1015	5
66	1	RACCORDO PORTAGOMMA	HOSE-COUPLING	A 16 1310	7
67	1	RACCORDO PORTAGOMMA	HOSE-COUPLING	D 70 1451	5
68	2	FASCETTA	HOSE CLAMP	A 33 1204	1
69	1	COPERCHIO SUPPORTO CAROTATORE	SUPPORT COVER	D 72 1182	25
		KIT GUARNIZIONI AK 50	SEALS KIT AK 50	D 68 0042	19
70		KIT GIUNTO ORIENTABILE	SWIVEL FITTING ASSEMBLY	D 68 0013	15

■ IDENTIFICA IL KIT GUARNIZIONI

● IDENTIFICA IL KIT GIUNTO ORIENTABILE

■ DENOTES PARTS IN SEAL KIT

● DENOTES PARTS IN SWIVEL FITTING ASS.